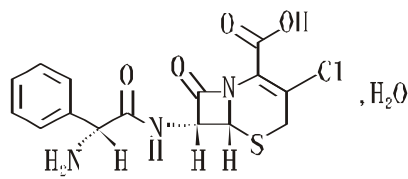


2006 10 26

Cefaclor Tablets  
Toubaokeluo Pian

(6R, 7R, -7-[R, -2-, -2- ]-3-, -8-, -5-, -1-  
[4.2.0] -2-, -2-



$C_{15}H_{14}ClN_3O_4S \cdot H_2O$

385.82

0.25g  $C_{15}H_{14}ClN_3O_4S$

0.25g(1 ) 3

4g(16 )

2.5%

(70 1 )

(50 1 )

(100 1 )

2

AST ALT

( 40 1 )

-

BUN  
( 1/200)

( 1/500)

1

-

( )

( )

2

2.3 2.8

3

(

4

)

( )

(

5

( )

6

Jaffe

7

8



) ( ) (

3 5

45 60  
85%  
25% 15% 50 70%  
0.6 0.9 8 60  
2

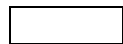
25 50%  
AUC ( 65 )

( 20 )

6 1 1  
8 1 1

24

2015  
H10960083



88

510515

(020)87063679

(020)87573176

(020)87061075

[http //www.byszc.com](http://www.byszc.com)