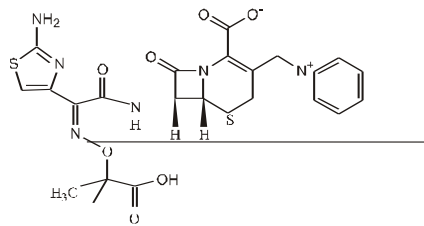


L-



$C_{22}H_{22}N_6O_7S_2 \cdot 5H_2O$

636.65

$C_{22}H_{22}N_6O_7S_2$

- | | | | |
|----|--------------|-------------|-----|
| 1. | | 4~6g(4~6) | 2~3 |
| | 10~14 | | |
| 2. | | 2~4g(2~4) | 2 |
| | 7~14 | | |
| 3. | | | |
| | 0.15~0.2g/kg | | 3 |
| 4. | | 30~100mg/kg | 2~3 |

1

(Cephalexin)

5%~10%

20%

2

3

4

5

6
7

Coombs
(ALT) (AST)

8 24 5% (20mg/ml)

65 6g 2/3~1/2 3g
1

B

B C

2
3
4

PBPs

70~72mg/L 120~146mg/L (t) 1g (Cmax)
1.5~2.3

17%~30% 5%~23% 24
84%~87% 1%

14~30 (4~5) 2ml/
(20)

1
10
24

2015
H20073008

